

Research Verify

General

Verify has 80 highly equipped greenhouse compartments available for research purposes on two locations in the Netherlands and 15 hectare of land around the buildings in Zwaagdijk. But trials can be done throughout the whole Netherlands and Belgium.

An enthusiastic team of specialists is creating the circumstances to achieve valid trial results and to gain as much as possible data from the trials. Flexibility is one of our key success factors.

The next trials can be performed:

- Registration trials (GEP certified)
- Residue trials (GLP certified)
- Demonstration trials

For specific pest-crop relations, the man pest are available in our laboratory.

For demonstration purposes, we can help with making the arrangements.



For registration purposes, specific pest-crop relations are chose to be able to extrapolate the data to a wide range of crops without testing each pest on each single crop.

Greenhouse crops

Verify has 80 highly equipped greenhouse compartments available for research purposes in Zwaagdijk, Naaldwijk and Honselersdijk. The facilities in Naaldwijk and Honselersdijk are located in the major greenhouse area where also the most wholesalers are located. Because of a flexible structure of all the compartments, they are all suitable for vegetable and ornamental cultures. The crops are grown in artificial growing media or soil.



Ornamentals:

- Cutting flowers
- Potted plants

Greenhouse vegetables

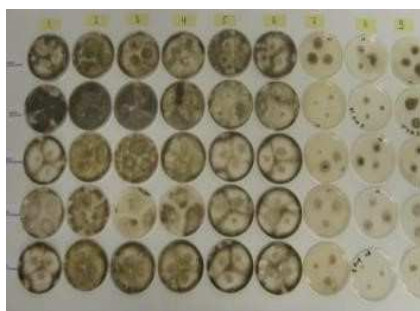
- Vertical growing crops
- Low crops

Trials, from screening for dose findings until trials for demonstration purposes, are done with artificial infections to achieve good infection levels. Applications can be targeted preventatively, eradicatedly or curatively.





Trials can also be done:

In-vitro screening

In vivo screening



Although it is impossible to have all possibilities mentioned, the main targets are listed below.

Main targets insects	Main target fungi	Plant growth
<p>Whiteflies <i>Trialeurodes vaporariorum</i> and <i>Bemisia tabaci</i> on gerbera</p> <p>Caterpillars <i>Chrysodeixis chalcites</i> and <i>Spodoptera exigua</i></p> <p>Mites <i>Tetranychus urticae</i></p> <p>Aphids <i>Aphis gossypii</i> and several other species for maximum extrapolation possibilities</p> <p>Thrips <i>Frankliniella occidentalis</i>, <i>Thrips tabaci</i>, <i>Echinothrips americanus</i></p> <p>Leaf miners <i>Liriomyza bryoniae</i> and <i>Liriomyza trifolii</i></p>	<p>Leaf infections on ornamentals and vegetables <i>Botrytis cinerea</i> on ornamentals and vegetables Powdery mildews (crop related) Downy mildews (crop related)</p> <p>Stem infections <i>Botrytis cinerea</i> <i>Colletotrichum spp.</i> <i>Rhizoctonia spp.</i></p> <p>Root infections <i>Pythium spp.</i> <i>Phytophthora spp.</i> <i>Fusarium spp.</i> <i>Verticillium spp.</i></p> 	<p>Germination Growth stimulation Growth reduction Cultivation system</p>   

Outdoor grown vegetables and agriculture

Verify has 15 hectare of land around the buildings in Zwaagdijk. But trials are done throughout the Netherlands and Belgium.

Vegetables

- Cabbage
- Leaf vegetables
- Strawberry
- Leek
- Chicory
- Carrots
- Other vegetables like asparagus



Arable farming

- Potatoes
- Onion
- All kind of wheat
- Grass
- Sugarbeet



Trials, from screenings for dose findings until trials for demonstration purposes, are done with artificial infections to achieve good infection levels. Applications can be targeted preventatively, eradictively or curatively.

The main targets are listed below.

Main target insects	Main target fungi	Plant growth
<p>Whiteflies <i>Aleyrodes proletella</i> on cabbage</p> <p>Caterpillars <i>Plutella xylostella</i> on cabbage</p> <p>Mites <i>Tetranychus urticae</i></p> <p>Aphids <i>Aphis gossypii</i> and several other species for maximum extrapolation possibilities</p> <p>Thrips</p>	<p>Leaf infections Phytophthora <i>Botrytis cinerea</i> on ornamentals and vegetables Powdery mildews (crop related) Downy mildews (crop related) <i>Albugo candida</i> Mycosphaerella (crop related) Puccinia <i>Fusarium spp.</i> Alternaria</p> <p>Stem infections <i>Botrytis cinerea</i> <i>Rhizoctonia spp.</i></p>	<p>Germination Growth stimulation Growth reduction Fertilizers</p> <hr/> <p>Weed All kind of weed</p>

<p><i>Thrips tabaci</i></p> <p>Gall (swede) midge <i>Contarinia nasturtii</i></p> <p>Cabbage root fly <i>Delia radicum</i></p>	<p>Root infections <i>Pythium spp.</i> <i>Phytophthora spp.</i> <i>Fusarium spp.</i> <i>Verticillium spp.</i></p>	
--	--	--



Fruit

Topfruit

- Apple
- Pear
- Plum


Little fruit

- Red berry
- Blackberry
- Blueberry
- Raspberry



Although it is impossible to have all possibilities mentioned, the main targets are listed below.

Main targets insects	Main target fungi	Plant growth regulators
<p>Mites <i>Panonychus ulmi</i></p> <p>Aphids <i>Eriosoma panigerum</i> and several other species for maximum extrapolation possibilities</p>	<p><i>Botrytis spp</i> Powdery mildews (crop related) Downy mildews (crop related) Puccinia <i>Fusarium spp.</i> Alternaria Monilia Scab (<i>Venturia inaequalis</i>)</p>	<p>Germination Growth stimulation Growth reduction</p>

<p>Thrips Thrips</p> <p>Gall midge <i>Dasineura mali</i>, <i>Dasineura pyrii</i></p> <p>Fruit moth <i>Cydia pomonella</i></p>	<p>Storage treatments To improve quality</p>	<p>Weed All kind of weed</p> 
--	---	---



Flowerbulbs

Flowering in spring

- Tulip
- Narcissus
- Hyacinth
- Crocus

Flowering in summer

- Liliium
- Gladiolus
- Zantedeschia

All bulb growing and forcing for flowers.

Trials from screenings for dose findings until trials for demonstration purposes, are done with artificial infections to achieve good infection levels. Applications can be targeted preventatively, eradicatedly or curatively.

The main targets are listed on the next page.

Main target insects	Main target fungi	Plant growth
<p>Aphids/virus <i>Aphis gossypii</i> and several other species</p> <p>Thrips <i>Thrips tabaci</i></p> <p>Mites <i>Eriophyus tulipae</i> <i>Rhizoglyphus robini</i> <i>Thyrophagus</i></p> <p>Cabbage root fly <i>Delia radicum</i></p>	<p>Leaf infections <i>Botrytis</i> <i>Botrytis tuliparum</i> <i>Botrytis elliptica</i> <i>Botrytis tulipae</i></p> <p>Bulb infections/soil infection <i>Rhizoctonia spp.</i> Fusarium <i>Pythium spp</i> Penicillium</p>	<p>Growth stimulation</p> <p>Weed All kind of weed</p> <p>Nematodes <i>Pratylenchus penetrans</i></p>

